

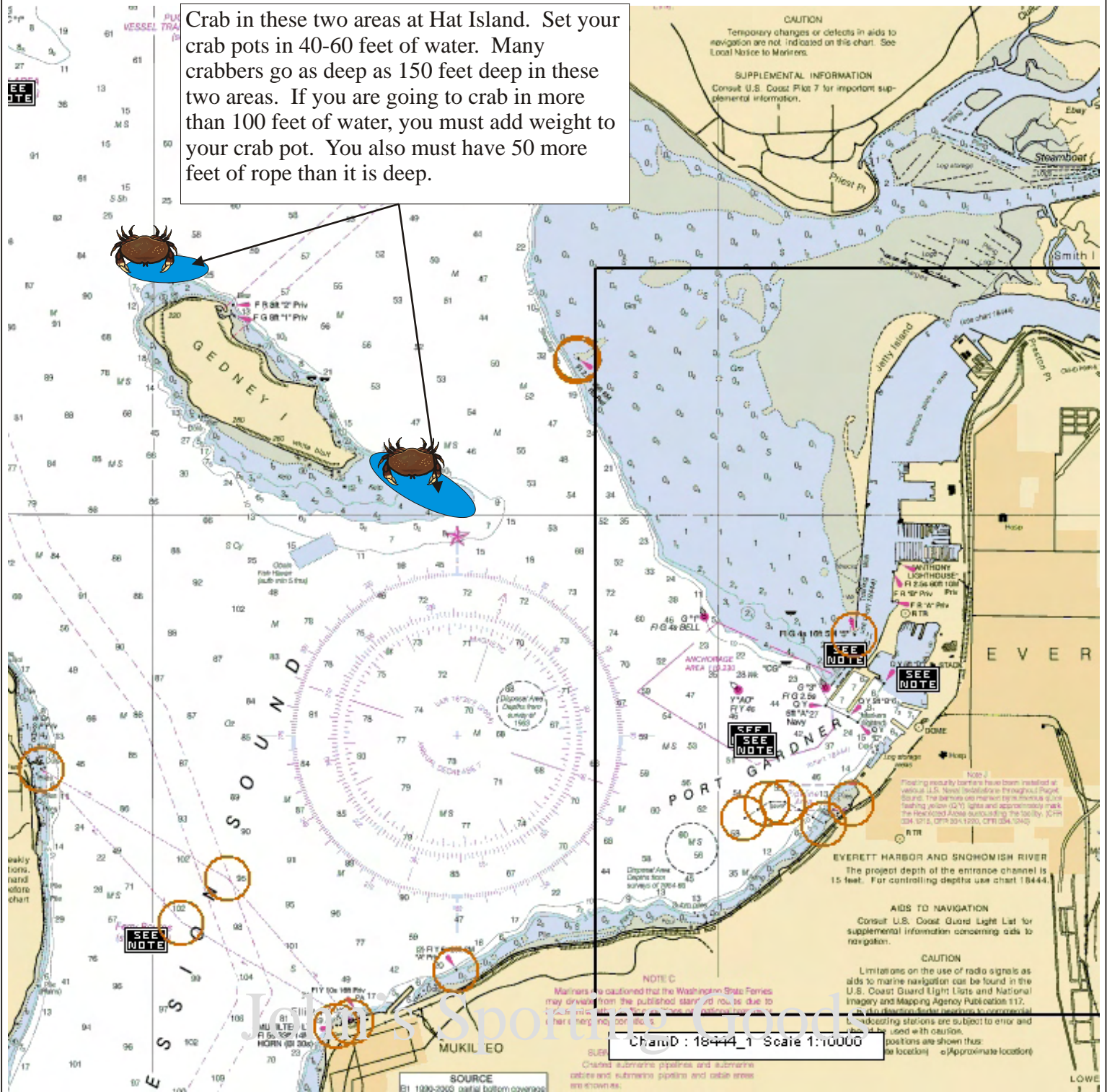
Fishing Maps



Maps For The Serious Angler

John's Sporting Goods

Crab in these two areas at Hat Island. Set your crab pots in 40-60 feet of water. Many crabbers go as deep as 150 feet deep in these two areas. If you are going to crab in more than 100 feet of water, you must add weight to your crab pot. You also must have 50 more feet of rope than it is deep.



Hat Island/Gedney Crab

January	Feb	March	April	May	June	July	August	Sept	Oct	Nov	Dec
						Crab	Crab	Crab			