

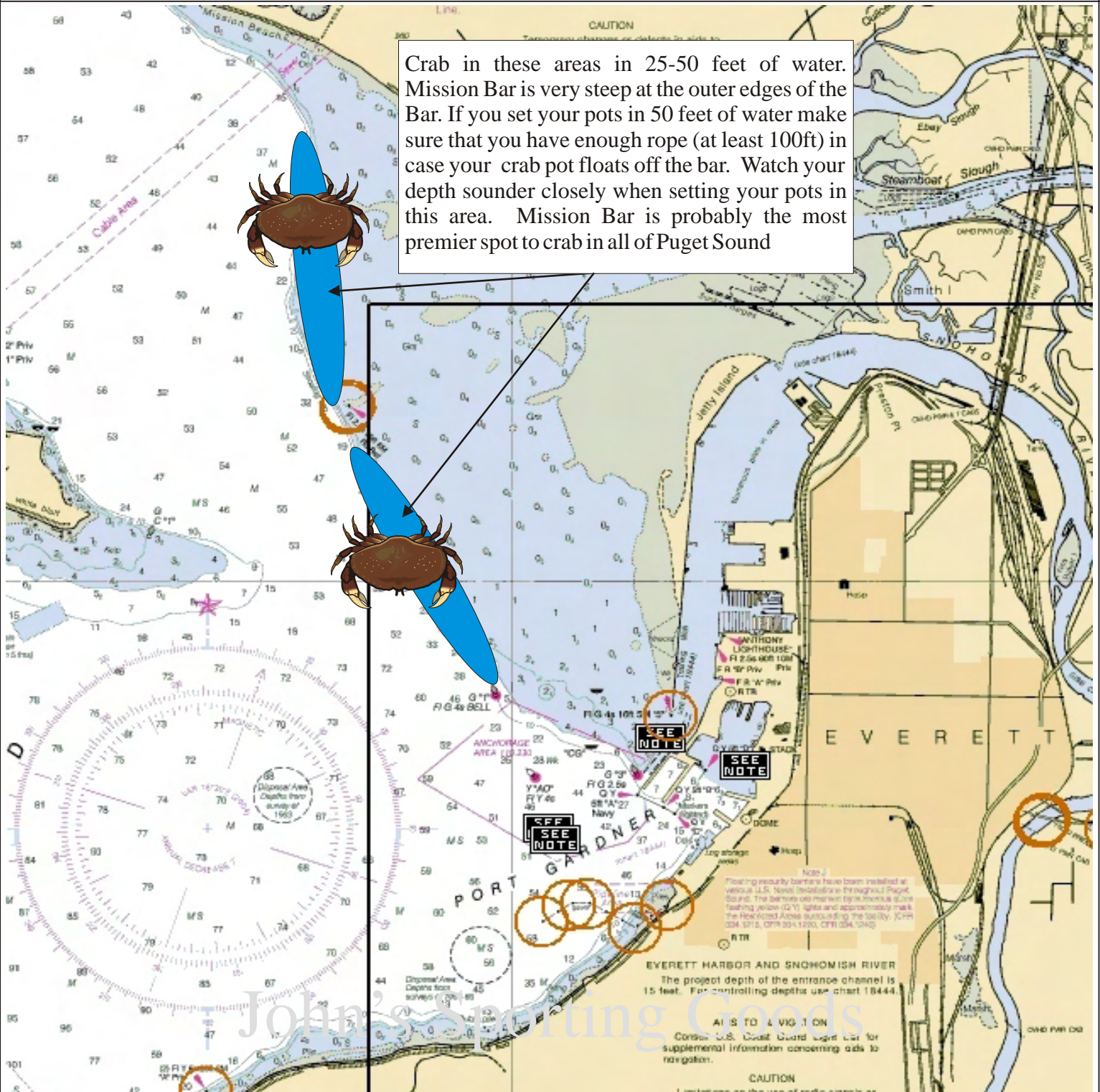
Fishing Maps



Maps For The Serious Angler

John's Sporting Goods

Crab in these areas in 25-50 feet of water. Mission Bar is very steep at the outer edges of the Bar. If you set your pots in 50 feet of water make sure that you have enough rope (at least 100ft) in case your crab pot floats off the bar. Watch your depth sounder closely when setting your pots in this area. Mission Bar is probably the most premier spot to crab in all of Puget Sound



Mission Bar Crab

January	Feb	March	April	May	June	July	August	Sept	Oct	Nov	Dec
						Crab	Crab	Crab			