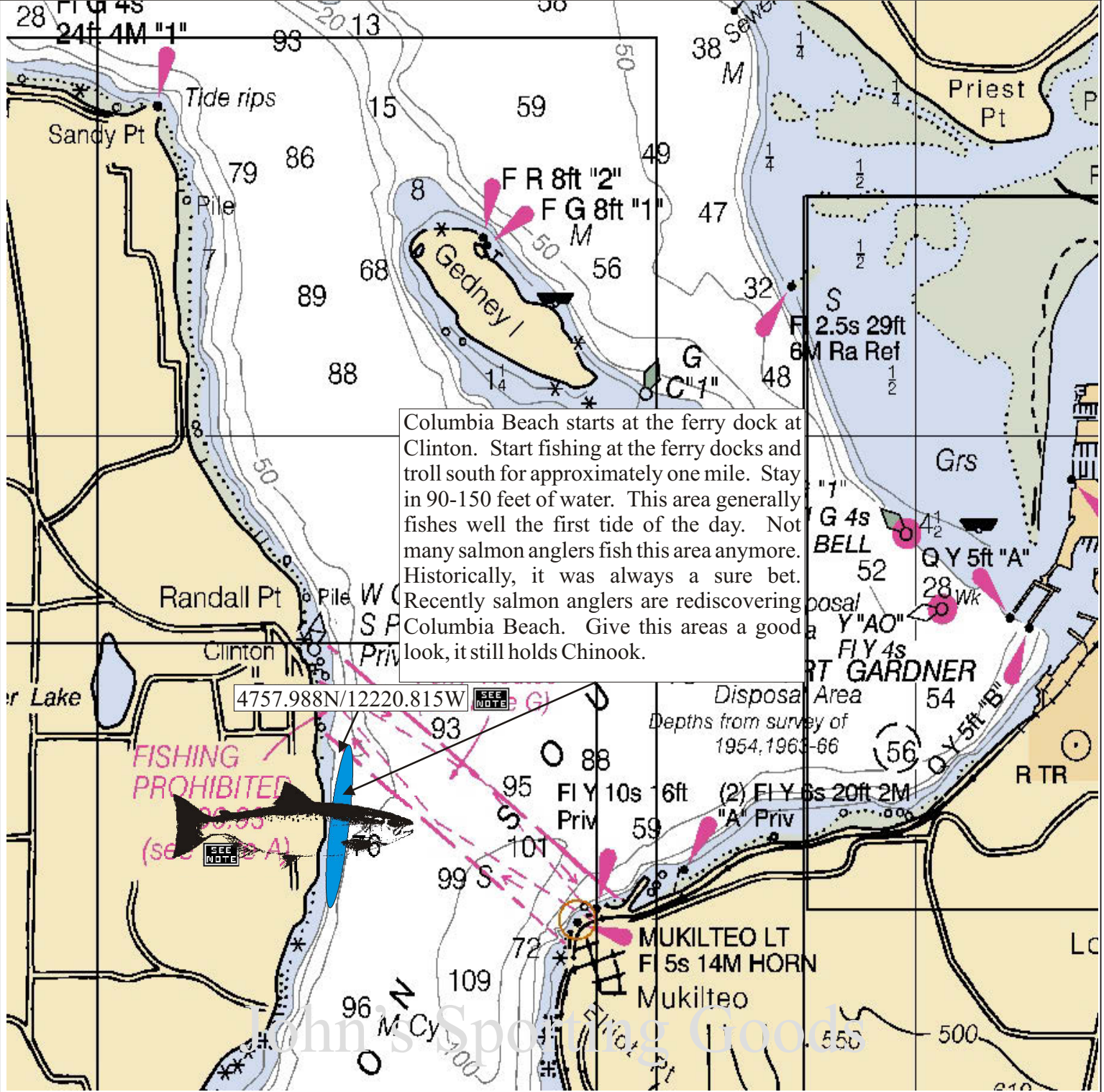


Fishing Maps



Maps For The Serious Angler

John's Sporting Goods



Columbia Beach starts at the ferry dock at Clinton. Start fishing at the ferry docks and troll south for approximately one mile. Stay in 90-150 feet of water. This area generally fishes well the first tide of the day. Not many salmon anglers fish this area anymore. Historically, it was always a sure bet. Recently salmon anglers are rediscovering Columbia Beach. Give this areas a good look, it still holds Chinook.

Columbia Beach Chinook

January	Feb	March	April	May	June	July	August	Sept	Oct	Nov	Dec
Chinook	Chinook	Chinook	Chinook							Chinook	Chinook