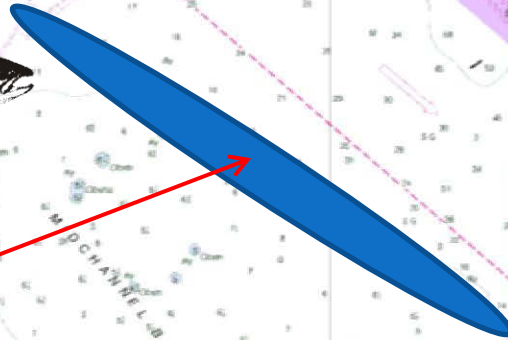
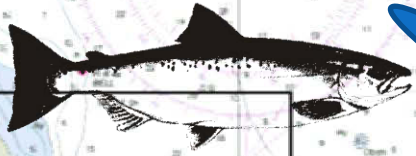


Mid Channel Bank Chinook

Port Townsend



Mid Channel bank is one of the premier Summer Chinook fishing areas. Fish this area in 90-120 feet of water. You must fish very close to the bottom at this spot. When the tide is running hard, let extra cable off your downrigger to keep you close to the bottom. Fish here when the tide is going out.

This area is called Craven Rock. Fish in this area when the tide is coming in. Fish in 90-120 feet of water.

Marrowstone Island

Craven Rock

