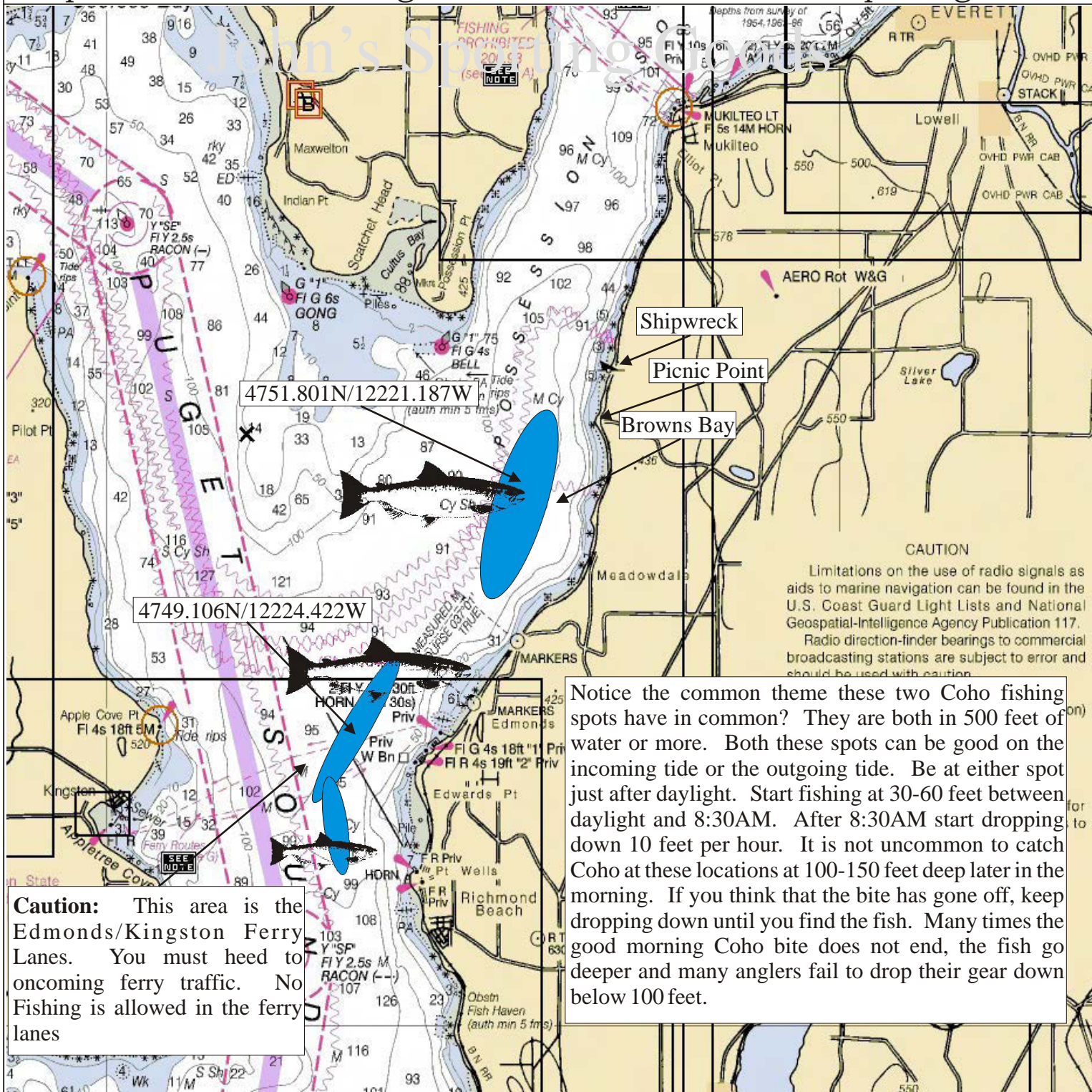


# Fishing Maps



Maps For The Serious Angler

John's Sporting Goods



Notice the common theme these two Coho fishing spots have in common? They are both in 500 feet of water or more. Both these spots can be good on the incoming tide or the outgoing tide. Be at either spot just after daylight. Start fishing at 30-60 feet between daylight and 8:30AM. After 8:30AM start dropping down 10 feet per hour. It is not uncommon to catch Coho at these locations at 100-150 feet deep later in the morning. If you think that the bite has gone off, keep dropping down until you find the fish. Many times the good morning Coho bite does not end, the fish go deeper and many anglers fail to drop their gear down below 100 feet.

**Caution:** This area is the Edmonds/Kingston Ferry Lanes. You must heed to oncoming ferry traffic. No Fishing is allowed in the ferry lanes

## Edmonds/Browns Bay Coho

January	Feb	March	April	May	June	July	August	Sept	Oct	Nov	Dec
							Coho	Coho			