

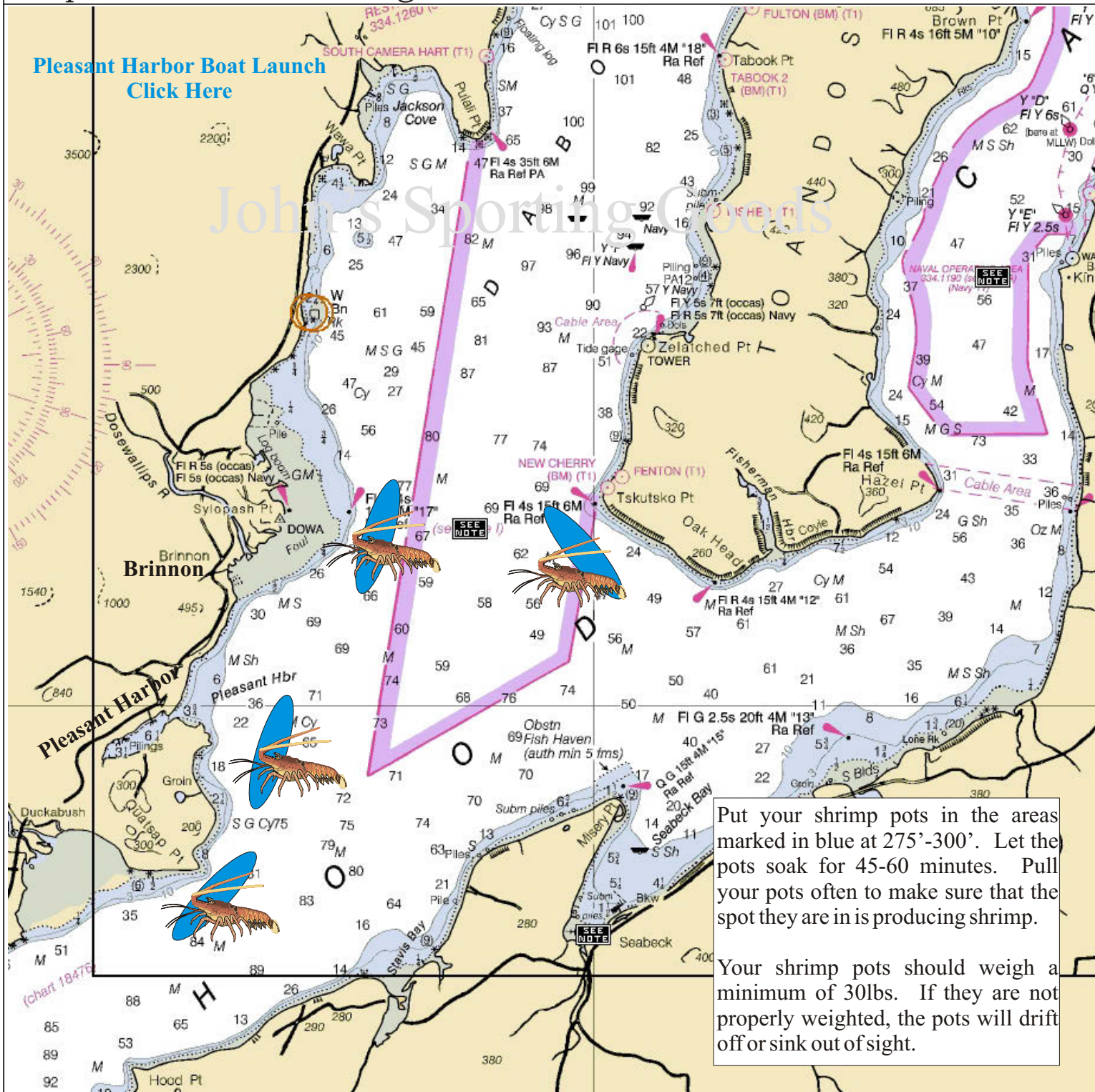
Fishing Maps



Maps For The Serious Angler

Pleasant Harbor Boat Launch
[Click Here](#)

John's Sporting Goods



Put your shrimp pots in the areas marked in blue at 275'-300'. Let the pots soak for 45-60 minutes. Pull your pots often to make sure that the spot they are in is producing shrimp.

Your shrimp pots should weigh a minimum of 30lbs. If they are not properly weighted, the pots will drift off or sink out of sight.

Hood Canal Spot Shrimp

January	Feb	March	April	May	June	July	August	Sept	Oct	Nov	Dec
				Shrimp							