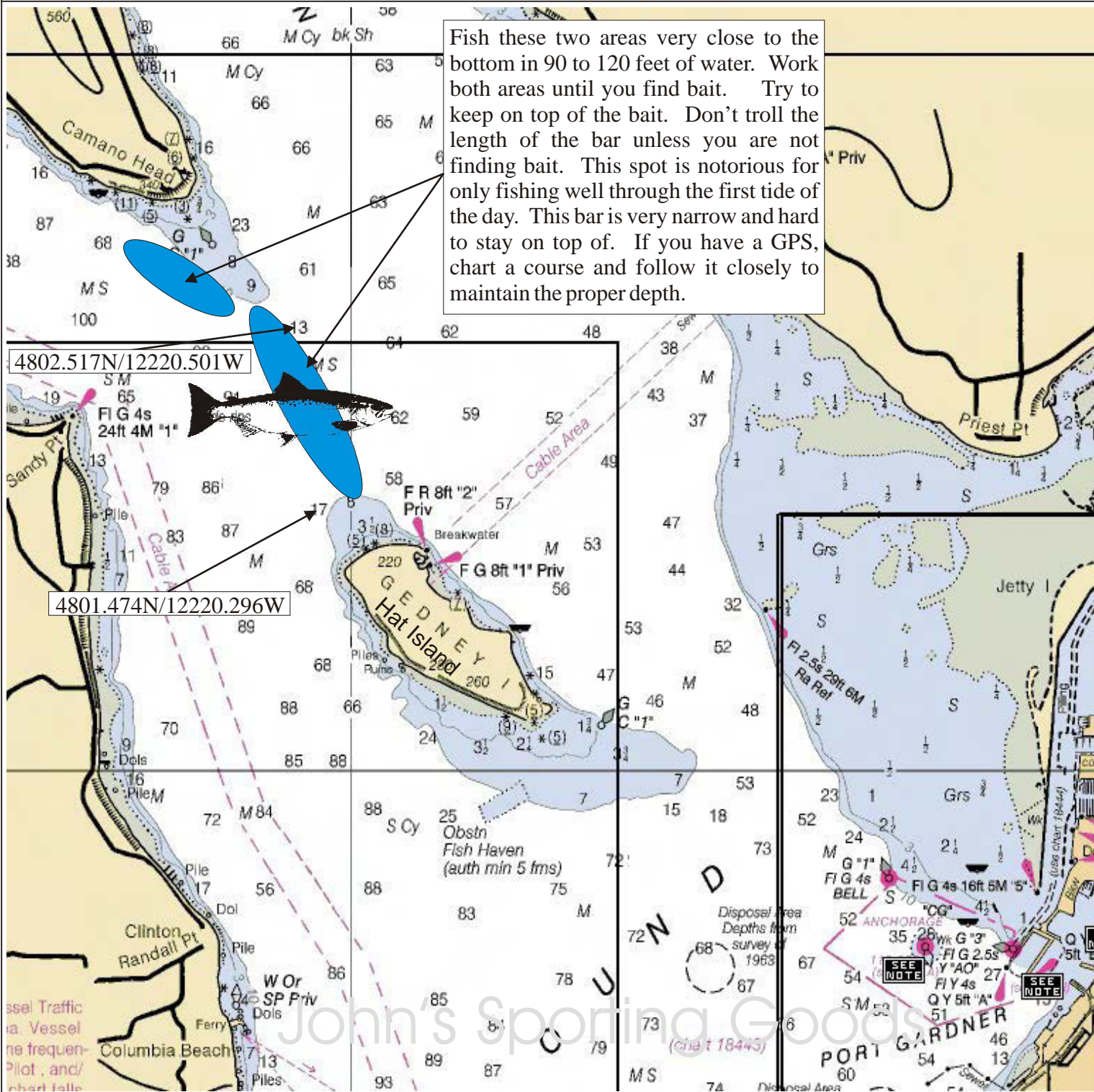


# Fishing Maps



Maps For The Serious Angler

John's Sporting Goods



Fish these two areas very close to the bottom in 90 to 120 feet of water. Work both areas until you find bait. Try to keep on top of the bait. Don't troll the length of the bar unless you are not finding bait. This spot is notorious for only fishing well through the first tide of the day. This bar is very narrow and hard to stay on top of. If you have a GPS, chart a course and follow it closely to maintain the proper depth.

4802.517N/12220.501W

4801.474N/12220.296W

## Hat Island/Race Track Chinook

January	Feb	March	April	May	June	July	August	Sept	Oct	Nov	Dec
Chinook	Chinook	Chinook	Chinook							Chinook	Chinook