

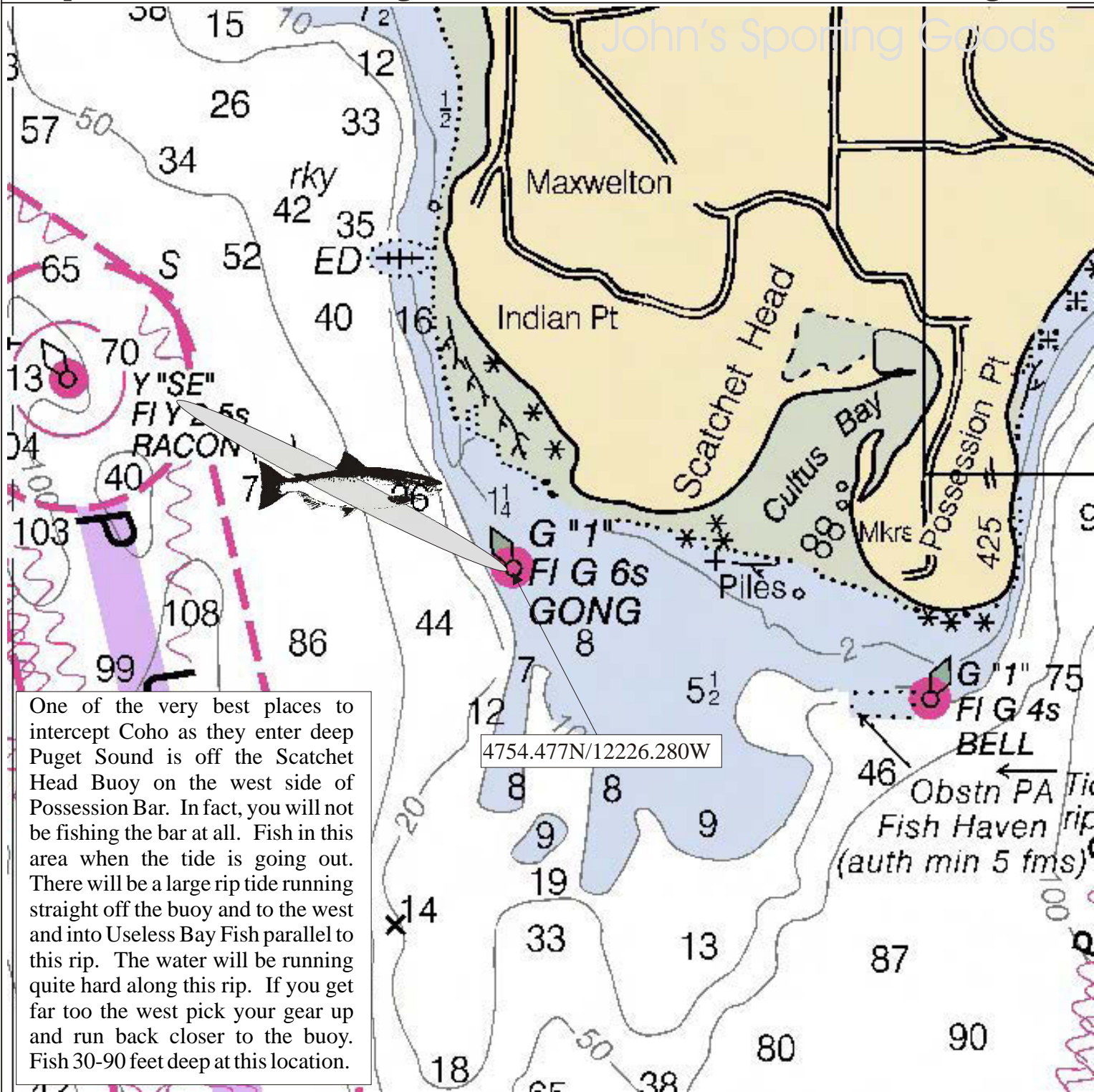
# Fishing Maps



Maps For The Serious Angler

Not Intended for Navigation

John's Sporting Goods



4754.477N/12226.280W

One of the very best places to intercept Coho as they enter deep Puget Sound is off the Scatchet Head Buoy on the west side of Possession Bar. In fact, you will not be fishing the bar at all. Fish in this area when the tide is going out. There will be a large rip tide running straight off the buoy and to the west and into Useless Bay Fish parallel to this rip. The water will be running quite hard along this rip. If you get far too the west pick your gear up and run back closer to the buoy. Fish 30-90 feet deep at this location.

## Scatchet Head Coho

January	Feb	March	April	May	June	July	August	Sept	Oct	Nov	Dec
							Coho	Coho	Coho		