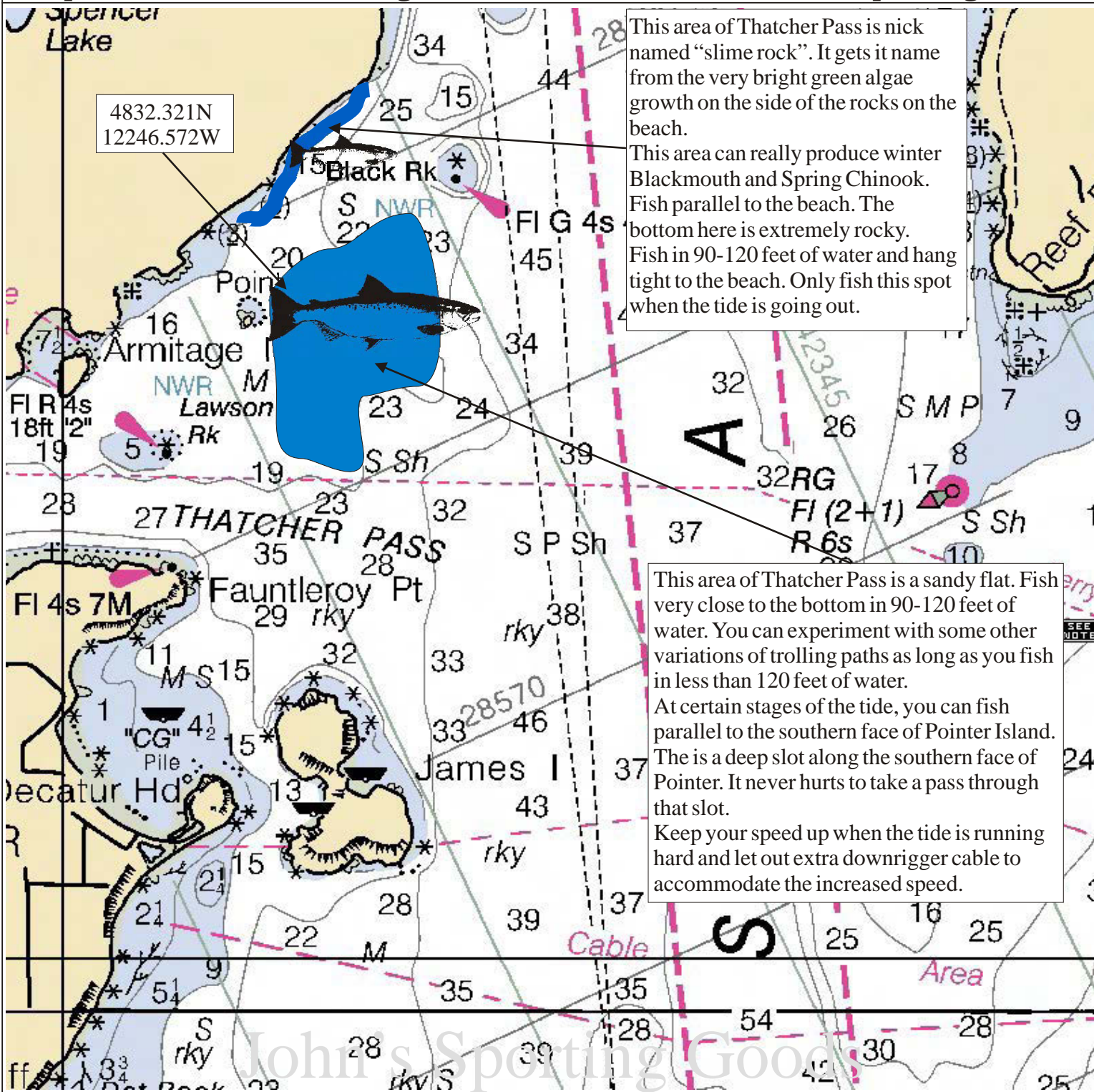


Fishing Maps



Maps For The Serious Angler

John's Sporting Goods



This area of Thatcher Pass is nick named "slime rock". It gets its name from the very bright green algae growth on the side of the rocks on the beach.

This area can really produce winter Blackmouth and Spring Chinook. Fish parallel to the beach. The bottom here is extremely rocky. Fish in 90-120 feet of water and hang tight to the beach. Only fish this spot when the tide is going out.

This area of Thatcher Pass is a sandy flat. Fish very close to the bottom in 90-120 feet of water. You can experiment with some other variations of trolling paths as long as you fish in less than 120 feet of water.

At certain stages of the tide, you can fish parallel to the southern face of Pointer Island. There is a deep slot along the southern face of Pointer. It never hurts to take a pass through that slot.

Keep your speed up when the tide is running hard and let out extra downrigger cable to accommodate the increased speed.

Thatcher Pass Summer Chinook

January	Feb	March	April	May	June	July	August	Sept	Oct	Nov	Dec
						Chinook	Chinook				