

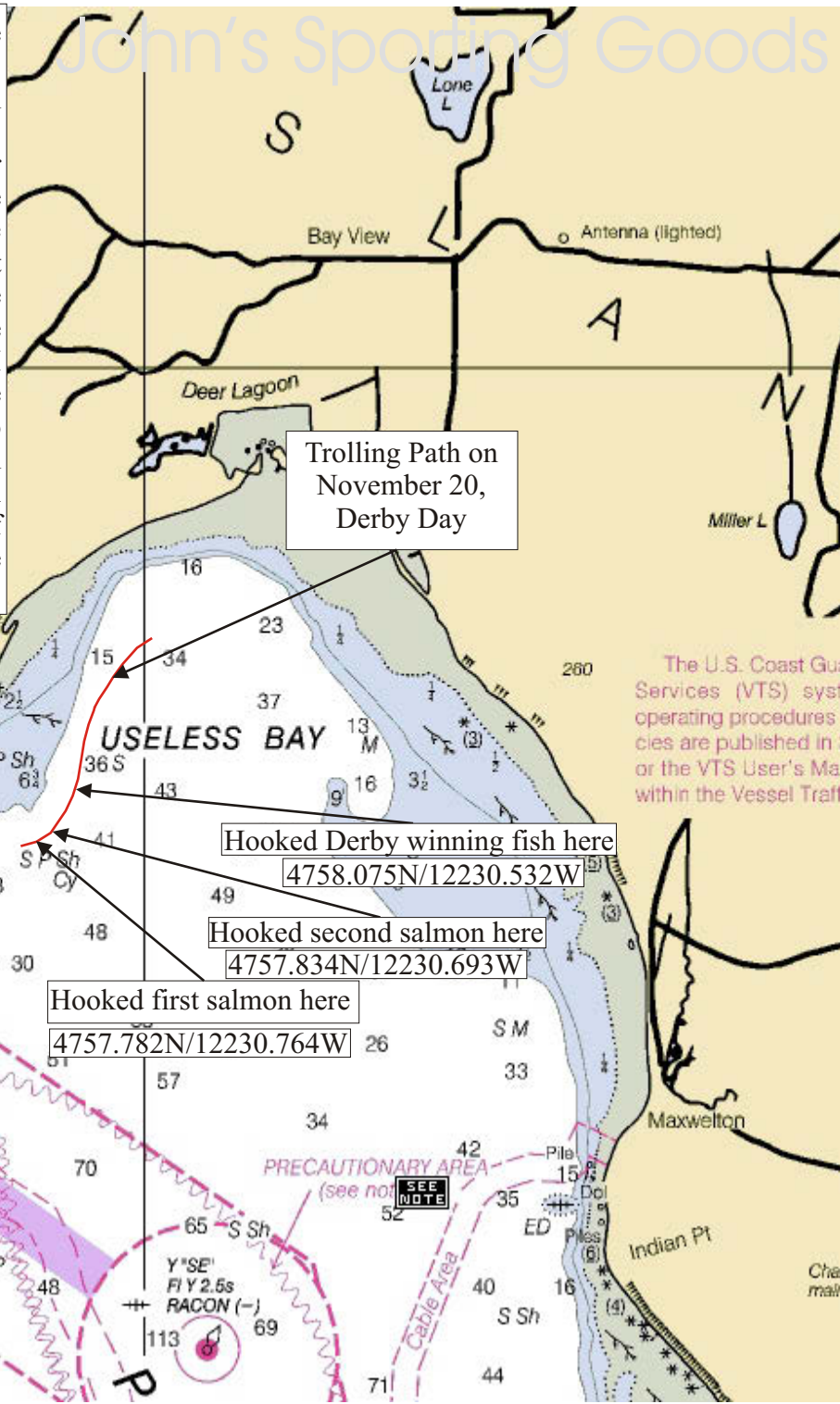
# Fishing Maps



Maps For The Serious Angler

www.Johnssportinggoods.com

The trolling path that I have outlined with the red line, varies between 90 and 110 feet of water. As you can see the three fish that we hooked on November 20, were closely clumped together. This is pretty typical for this area. Remember this: on a different tide with different current, the fish could have been further inside the Bay. The current was not very strong this day and it allowed the bait and salmon to be on the outside corner of the bar. A strong tide will force all the fish to the inside of the Bay. On a strong tide, I will not venture out as far as the place where the first fish was hooked. The current would be too strong. If the current is strong, it traps you on that outside corner. If that happens, you to pull all the gear up and run back inside the Bay. If you don't, you will waste too much time on the outside corner.



## Useless Bay Chinook

January	Feb	March	April	May	June	July	August	Sept	Oct	Nov	Dec
Chinook	Chinook	Chinook	Chinook							Chinook	